

# PUTTING CUPS 旗洞杯

---



1

## Ever-White Cup

The patented Ever-White Cup has revolutionized the putting cup by teaming an aluminum outside with a bright white plastic sleeve.

- No paint to chip, eliminating the need for stripping, sanding and painting.
- Easily replaceable sleeve stays tight in the cup during play.
- Resonates with the classic aluminum sound when the ball drops in.

### 1. Ever-White Cup

Patented aluminum cup complete with plastic sleeve.  
Meets all USGA regulations.  
935

---



### Ever-White Cup Replacement Sleeves

Case of 18. (Sleeves not sold individually)  
935-1

---

## 吉陽實業股份有限公司

總公司地址: 桃園縣龜山鄉新興街 121-2 號  
南部服務中心: 嘉義市吳鳳南路 547 巷 46 號  
服務專線: 03-3288718 FAX: 03-3288719  
E-mail: [jyn@msl.hinet.net](mailto:jyn@msl.hinet.net)  
Web site: [www.jtic.com.tw](http://www.jtic.com.tw)



2

Regulation Plastic  
Putting Cup



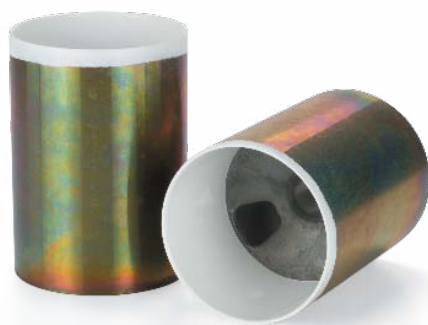
3

Practice Green Plastic  
Putting Cup



4

Aluminum Putting Cup



5

Zinc Cup



6

Cup Stop

## 2.Regulation Plastic Putting Cup

Durable bright white plastic cup featuring minimum taper for a snug fit, both on the course and on the practice green. Meets all USGA regulations.  
920 6 in. (15 cm) Regulation Cup

## Aluminum Putting Cup (cont.)

- Surfaces anodized and dichromated for ultimate corrosion protection.
  - The cup's vertical surfaces are powder coated bright white. The bottom of the cup is not powder coated, so there's no paint to chip.
- 930 6 in. (15 cm)  
Regulation Cup

## 3. Practice Green Plastic Putting Cup

Durable bright white plastic cup featuring minimum taper for a snug fit. Meets all USGA regulations.  
940 4 in. (10 cm) Practice Cup

## 4.Aluminum Putting Cup

- Our classic model, its diecast oversize, then machined down to precision dimensions to minimize "wobble" in the hole. Meets all USGA regulations

## 5.Zinc Cup

Same characteristics as the aluminum model but molded in Zinc for improved overall strength. Zinc also increases weight of cup for more stability. Inside of cup powder coated white. Meets all USGA regulations.  
937 6 in. (15 cm) Regulation Cup

## 6. Cup Stop

By inserting this rigid plastic disk into the bottom of the cup, the cup will not "sink" into the green once it is set. Also prevents flagsticks from "bottoming out." Please choose the appropriate cup stop to fit your Par Aide model putting cups.  
932 Use with Par Aide cup model #'s 920, 930 and 935 only. Set of 18.

# 吉陽實業股份有限公司

總公司地址: 桃園縣龜山鄉新興街 121-2 號  
南部服務中心: 嘉義市吳鳳南路 547 巷 46 號  
服務專線: 03-3288718 FAX: 03-3288719  
E-mail: [jyn@msl.hinet.net](mailto:jyn@msl.hinet.net)  
Web site: [www.jtic.com.tw](http://www.jtic.com.tw)